

POLYMER CONCRETE HANDHOLE

24" x 36" x 24"

POLYMER CONCRETE

TIER 22: Driveway, parking lot, and offroadway applications subject to occasional non deliberate heavy vehicular traffic.

Dimensions: 24" x 36" x 24" **Tolerances:** +- 1.596
Aproximate Weight:

- **Cover:** 147 Lb
- **Box:** 188 Lb

Polymer concrete color: Beige.



● FEATURES

- Polymer Concrete compressive strength= 11500 psi.
- Rupture modulus (average 247 kg/cm2) according ASTM C-78
- Water absorption (average 0.136%)
- Non Conductive material

● ESPECIFICATIONS

- Polimer concrete cover and frame reinforced with fiberglass
- $\frac{3}{16}$ " Stainless steel lift pin
- $\frac{3}{8}$ " Stainless steel hex bolt fastening system
- Load Rating: Tier 22



info@aetherfiber.com | aetherfibersolutions.com



+1 (866) 724-2435



POLYMER CONCRETE HANDHOLE

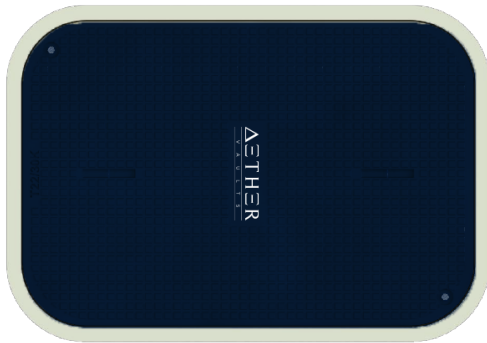
24" X 36" X 24"

POLYMER CONCRETE

TIER 22: Driveway, parking lot, and offroadway applications subject to occasional non deliberate heavy vehicular traffic.

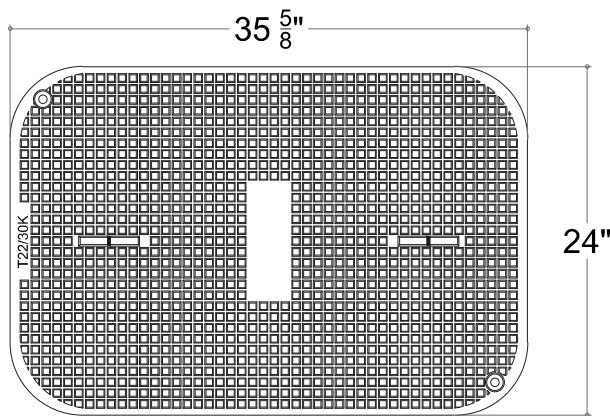


ÍTEM
MU-POL-13
MU-TPOL-13

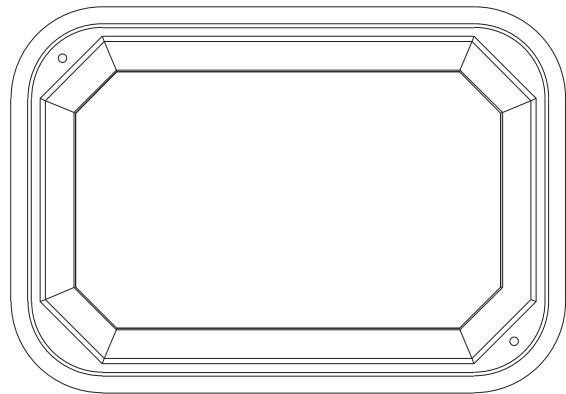


BOX TOP PLANE

POLYMER CONCRETE



COVER TOP VIEW



BOX TOP VIEW



info@aetherfiber.com | aetherfibersolutions.com



+1 (866) 724-2435



POLYMER CONCRETE HANDHOLE

24" x 36" x 24"

POLYMER CONCRETE

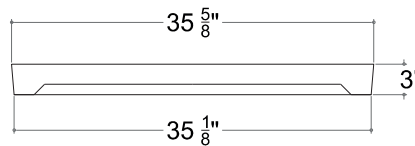
TIER 22: Driveway, parking lot, and offroadway applications subject to occasional non deliberate heavy vehicular traffic.



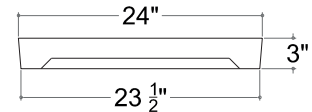
ÍTEM
MU-POL-13
MU-TPOL-13

COVER FRONT AND SIDE PLANE

POLYMER CONCRETE



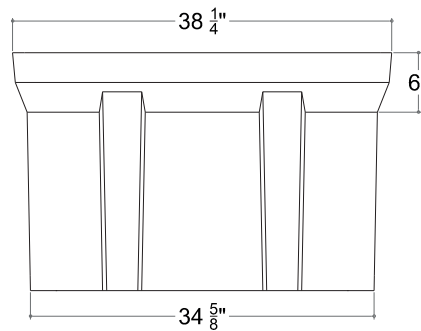
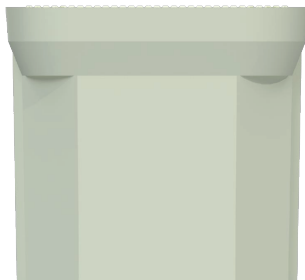
COVER FRONT VIEW



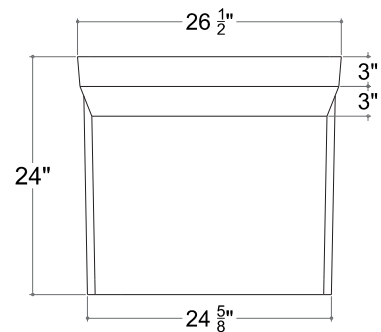
COVER SIDE VIEW

VIEW FRONT AND SIDE PLANE

POLYMER CONCRETE



FRONT VIEW



SIDE VIEW

TOLERANCES: +- 1.5% DIMENSIONS: IN



info@aetherfiber.com | aetherfibersolutions.com



+1 (866) 724-2435

